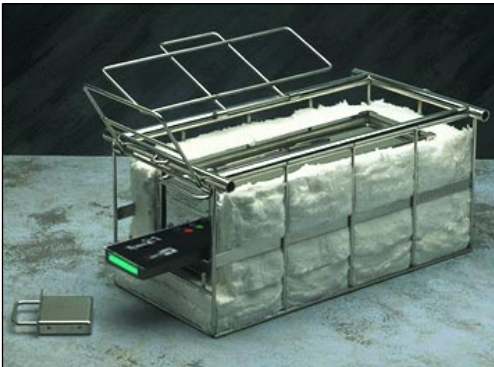




www.datapaq.com

# Furnace Tracker system for billet re-heat furnaces



DATAPAQ Furnace Tracker system for billet re-heat furnaces

**Datapaq's Furnace Tracker monitoring system brings you the latest technology to get accurate and comprehensive temperature profiles of your billet while in the re-heat furnace.**

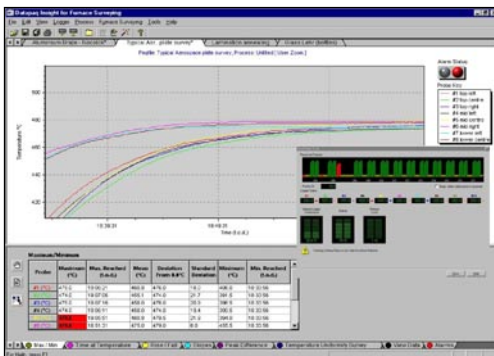
This system is mounted on a special "fork" welded to the billet and travels with the product to monitor its true temperature throughout the rotary hearth or walking beam furnace.

Billet re-heat processes up to 3.5 hours\* long with average temperatures of up to 1250°C can be monitored. The Furnace Tracker system will monitor from up to 10 thermocouples placed at various distances along the billet and at specific depths within the billet. This ensures that you get maximum temperature information from the trial.

\* (longer process possible - contact Datapaq)

## System features:

- Low thermal barrier height and width (250 mm) - to minimise loading problems
- High thermal capacity (up to 3.5 hours) - to cope with rolling mill stoppages
- Incorporates new technologies:
  - "Phased evaporation" for long thermal duration
  - "Floating plate" for minimal barrier distortion
- Made of rugged high grade stainless steel to resist high temperatures
- 8 or 10 thermocouples (for maximum information)



DATAPAQ Furnace Tracker for Insight software

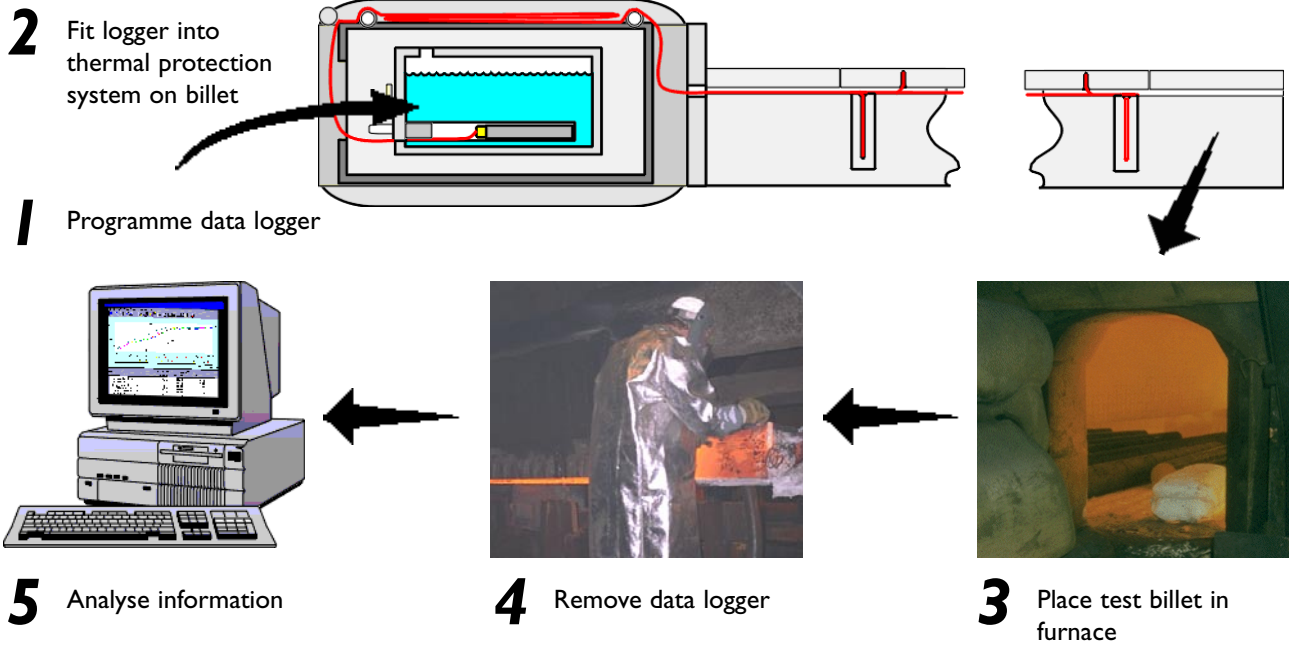
**In billet re-heat furnaces, the Furnace Tracker system gives you these important benefits:**

- True knowledge of stock temperatures allows you to set optimum re-heat furnace conditions
- Scale layer can be minimised to increase mill yields
- Non-uniform heating that cause tube eccentricity can be identified
- Gives vital information for verification of mathematical furnace models
- Problem areas of furnace (hot and cold spots) quickly identified



Furnace Tracker system in rotary hearth furnace

## How it works



## Tpaq21 data logger specifications



Model number	TP2186, TP2116
Temperature range	-190°C – 1370°C
Max. operating temp.	110°C
Memory	130,000 data points
Number of channels	8 or 10
Sampling interval	
No telemetry	0.1 sec – 50 mins
RF telemetry	3 secs – 50 mins (TP2116 only)
Accuracy	+/- 0.3°C
Battery options & life	VHT Lithium (up to 250 hours)
Thermocouple type	K

## Technical specifications



### Thermal protection system - TB4066

#### Includes:

TB4059	Evaporative water barrier
TB9216	Insulation retaining frame
CS2009	Insulation set and templates
TB9223	Thermocouple control clamp

#### Duration:



3.5 hours at constant 1250°C

#### Overall dimensions:

550mm long x 250mm wide x 250mm high

#### Weight:

Empty = 21kg  
Filled = 25.5 kg

	<b>Europe and Asia</b> DATAPAQ Limited, Deanland House, 160 Cowley Road, Cambridge CB4 0GU, UK Tel: +44 (0)1223 423 141 Fax: +44 (0)1223 423 306 e-mail: sales@datapaq.co.uk Web: www.datapaq.com
	

<b>North and South America</b> DATAPAQ Inc. 187 Ballardvale Street Wilmington, MA 01887, USA Tel: +1 978 988 9000 Fax: +1 978 988 0666 e-mail: sales@datapaq.com Web: www.datapaq.com
------------------------------------------------------------------------------------------------------------------------------------------------------------------------------------------------------------

*Due to continuing product improvements, specifications are subject to change without prior notice.*